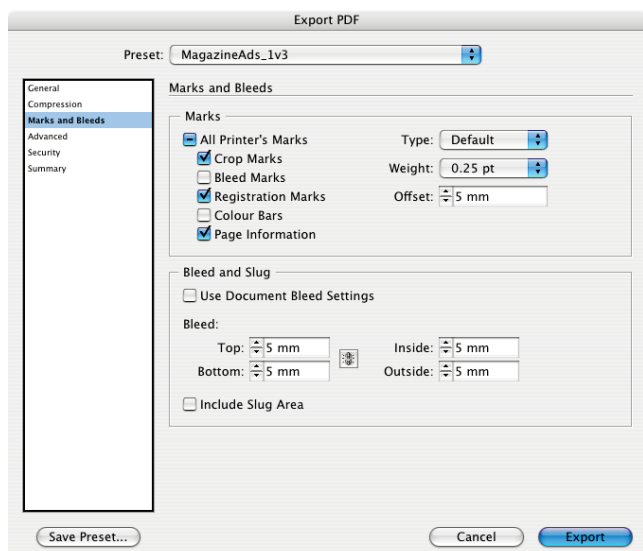
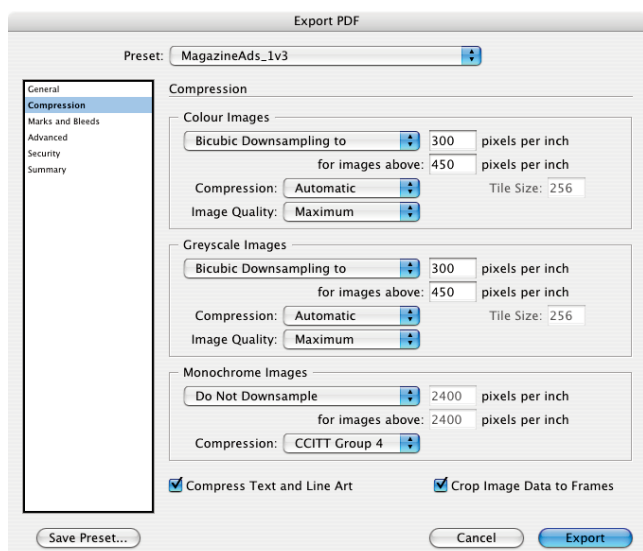
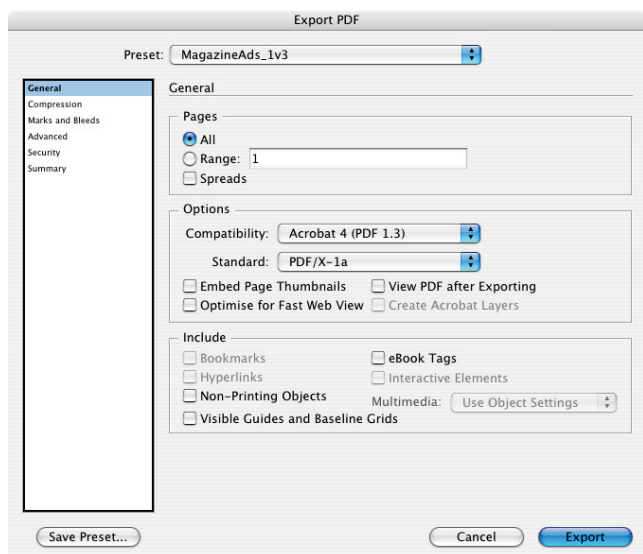
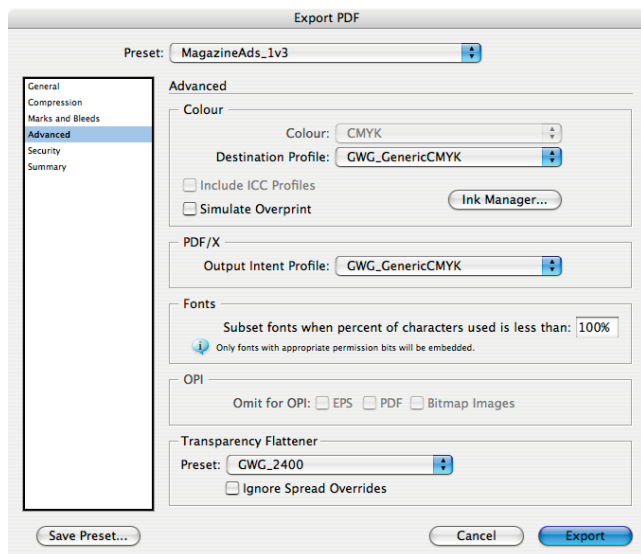


## MagazineAds\_1v3.pdfs for Adobe InDesign 3 (Creative Suite 1) PDF Export Settings



## MagazineAds\_1v3.pdfs PDF Export Preset (Creative Suite 1) cont.



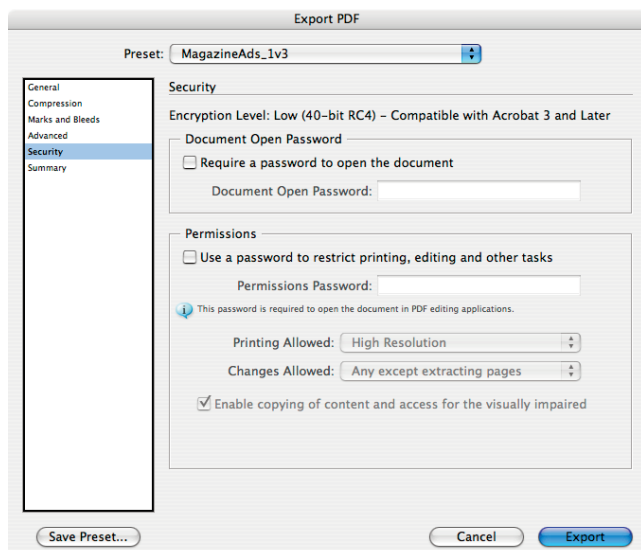
In this field it is very important to select the proper colour conversion settings yourself:

- please check with your output provider which ICC profile is appropriate, or select the ICC profile that was used for converting images to CMYK in PhotoShop or InDesign;

- the indicated GWG\_Generic\_CMYK.icc selected here indicates that colour conversion settings are not specified;

Colours in your document will change if:

- objects in RGB colour space with or without ICC profiles are used in the document
- CMYK objects with different ICC profiles are placed in the document



The GWG\_2400 Transparency Flattening settings are set under Edit>Transparency Flattening Presets>New... as below:

